



OPEN ME FIRST

CBY Appliance Powered by
Veritas Backup Exec.



<https://www.cbyappliances.com/>

Congratulations

On Your purchase of CBY Appliance – Powered by VERITAS Backup Exec



Business Value

In today's complex world of information technology and data protection, there are many challenges and considerations associated with building, implementing, and supporting any backup solution. These challenges often lead to delayed projects, overspent budgets and failure.

For these and many other factors, organizations are seeking a simple appliance based solution. This approach reduces complexity, cost and associated risks. With the cooperation of Veritas Backup Exec and Intel, a single appliance that contains high performance backup server, flexible data storage, and strong capability backup application across physical, virtual and cloud environment is now available.

About Veritas Backup Exec

Veritas™ Backup Exec delivers powerful, flexible and trusted data protection across virtual, physical and cloud environments. Veritas™ Backup Exec is designed to help you streamline operations with intuitive wizards, insightful dashboards and radically faster performance. With Veritas™ Backup Exec you can meet data recovery objectives and reduce overall costs while eliminating traditional backup complexity.

Key Features and Benefits

- Unified solution for virtual, physical, public and hybrid cloud environments simplify data protection and eliminates the cost and complexity of multiple point products.
- Support for Azure Files and Amazon FSx managed file systems.
- Support for all AWS storage tiers, including Amazon Glacier, Glacier Deep Archive, Amazon S3 IA One Zone and Intelligent Storage Tiering.
- Protection against ransomware attacks thanks to the Ransomware Resilience feature that protects backups hosted on a media server from being modified by unauthorized processes.
- Backup Exec Accelerator for VMware and Hyper-V drastically reduces backup windows and eliminates the need for full backups.
- Support for SQL environments utilizing SQL Always On technology.
- Fast virtual machine snapshots through Hyper-V Resilient Change Tracking and deep integration with Microsoft® Volume Shadow Copy Service (VSS) and VMware vStorage™ APIs for Data Protection (VADP) minimizes CPU, memory and I/O load performance impacts on the virtual environment.
- Instant Recovery of VMware and Hyper-V virtual machines provides an immediately usable copy of the server and data for DR, compliance, testing and application deployment.
- Recovery Ready automates DR testing of virtual machine backups to ensure recoverability.
- GDPR Guard allows you to implement information erasure requests for enhanced compliance.
- Integrated bare-metal DR, physical to virtual (P2V) and virtual to physical (V2P) recovery help minimize downtime and disruption.
- Instant Cloud Recovery provides seamless failover to Microsoft® Azure in case of disaster.
- Superior security for your data through integrated 128-/256-bit AES industrial-strength encryption and compliance with Payment Card Industry Data Security Standard (PCIDSS) 3.1/3.2.

About CBY

CBY provides comprehensive and advanced appliances, so that users enjoy simple, stable performance and large storage space of digital applications. Intel's perfect integration of technology and design concepts, effectively improve the enterprise file management, virtualization applications, storage space management, and security monitoring management efficiency.

Veritas Backup Exec on CBY Appliance

Veritas understands the shifting needs of the data centre. With the cooperation with Intel, Veritas have Backup Exec deployed on CBY Appliances as a way for

customers to simplify deployment and maintenance of their critical data protection infrastructures. With this cooperation, it represents the continuing evolution of Intel and Veritas Backup Exec family, offering new features to meet the evolving needs of data protection.

Benefits of CBY Appliances

Fully Integrated Solution

Hardware and software all-in-one box. They are more secure, easy to install and maintain, and optimized for application performance.

Cost Effective Solution

Consolidate your backup infrastructure and leverage the perpetual front-end capacity-based Backup Exec licensing model of CBY Appliances.

Easy Implement & Manage




Backup Exec server pre-installed in the appliance. Client machines can be protected with just a few easy configuration steps

Performance & Scalability

With predictable performance, CBY appliances can run multiple types backup jobs simultaneously.



CBY Appliances, Powered by Backup Exec, configurations

 <p>CBY-BE 4K</p> <p>1U Rack Mount 4 TB</p> <p>Support 1-3 Years</p>	 <p>CBY-BE 8K</p> <p>2U Rack Mount 8 TB</p> <p>Support 1-3 Years</p>	 <p>CBY-BE 16K</p> <p>2U Rack Mount 16 TB</p> <p>Support 1-3 Years</p>
--	--	--

Support: Email & Remote Support is 24 x 7.
Warranty Registration , Ticket Check & Support @ www.Cbyappliances.com

CBY Veritas Appliance – CBY-BE 4K

Form Factor	1U	Dimensions (in)	1.7" (H) X 17.2" (W) X 19.85" (D)
Processor	8 Cores	Memory	32 GB
Network Interface	2x 1GbE OR 2x 10GBase-T	Disk Arrangement	2 X 240GB OS, 2 X 4TB Backup
Features			
Redundant Disk Array	Yes	Hot Swappable Disks	Yes
Intelligent Platform Management Interface (IPMI)	Yes	Redundant Power Supply	Yes

CBY Veritas Appliance - CBY-BE 8K

Form Factor	2U	Dimensions (in)	3.5" (H) X 17.2" (W) X 25.5" (D)
Processor	8 Cores	Memory	64 GB
Network Interface	2x 10GBase-T	Disk Arrangement	2 X 240GB OS, 3 X 4TB Backup
Features			
Redundant Disk Array	Yes	Hot Swappable Disks	Yes
Intelligent Platform Management Interface (IPMI)	Yes	Redundant Power Supply	Yes

CBY Veritas Appliance - CBY-BE 16K

Form Factor	2U	Dimensions (in)	3.5" (H) X 17.2" (W) X 25.5" (D)
Processor	8 Cores	Memory	64 GB
Network Interface	2x 10GBase-T	Disk Arrangement	2 X 240GB OS, 6 X 4TB Backup
Features			
Redundant Disk Array	Yes	Hot Swappable Disks	Yes
Intelligent Platform Management Interface (IPMI)	Yes	Redundant Power Supply	Yes

For More Information

Link	Description
http://www.backupexec.com	Backup Exec Home Page
http://www.backupexec.com/compatibility	Compatibility Docs
https://cbyappliances.com/cby_veritas_appliance	CBY Veritas Appliance Page

For Sales: Local Veritas Sales Rep / Email: sales@cbyappliances.com
 For Support: Email : support@cbyappliances.com

Setup Guide



Appliance

Reference: SR # 78651BR9450
Version: 3.25

Copyright © Epacts Consulting & Tech Services LLP. 2021. All rights reserved.
No part of this document may be reproduced or transmitted in any form or by any means without prior written consent of Epacts Consulting & Tech Services LLP.

Trademarks and Permissions

All trademarks and trade names mentioned in this document are the property of their respective holders.

Notice

The Informed products, services and features are stipulated by the contract made between Epacts Consulting & Tech Services LLP. and the customer. All or part of the products, services and features described in this document may not be within the purchase scope or the usage scope. Unless otherwise specified in the contract, all statements, information, and recommendations in this document are provided "AS IS" without warranties, guarantees or representations of any kind, either express or implied. The information in this document is subject to change without notice. Every effort has been made in the preparation of this document to ensure accuracy of the contents, but all statements, information, and recommendations in this document do not constitute a warranty of any kind, express or implied.

Unboxing of CBY Appliance



Unpack, Inspect, and Rack Mount the Appliance

CBY Services ships a carton containing the Appliance, Open Me First Envelope & Accessories.

Follow these steps:

- Unpack the carton.
- Verify that the carton contains all of the items from the parts list that is included in the carton. If an item is not present, contact CBY Services Support.
- Mount the appliance in the server rack.

Each CBY Veritas BE Appliance comes preconfigured with Microsoft Operating System and veritas Backup Exec Capacity License Subscription.



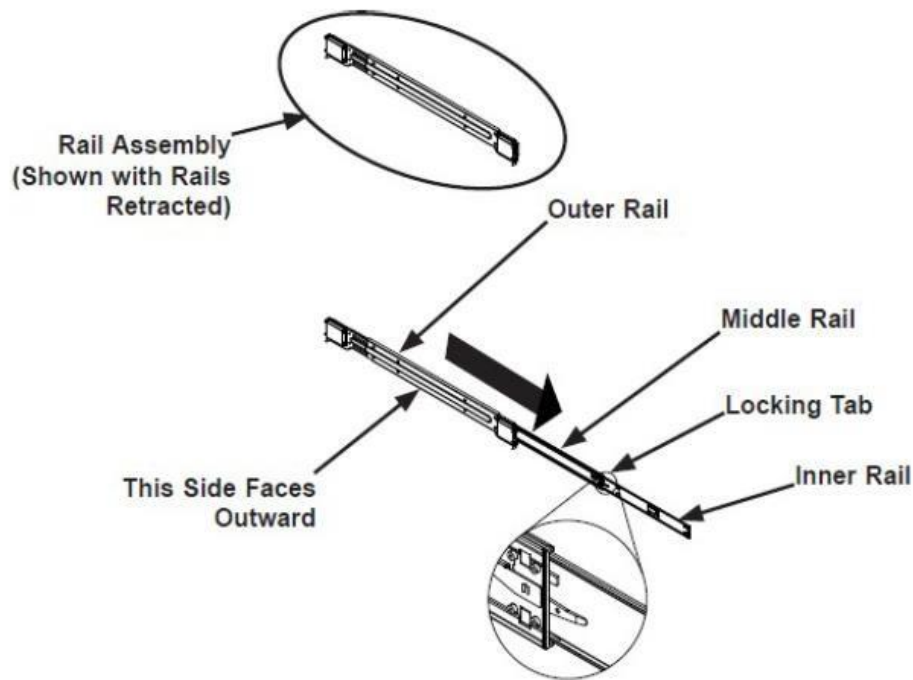
Rack Installation Instructions

This section provides information on installing the CBY VERITAS appliance into a rack or cabinet with the rails provided. There are a variety of rack/cabinet units on the market, which may mean that the assembly procedure will differ slightly. You should also refer to the installation instructions that came with the rack unit you are using.

NOTE: This rail will fit a rack/cabinet between 26" and 33.5" deep.

Identifying the Sections of the Rack Rails

The chassis package includes two rack rail assemblies in the rack mounting kit. Each assembly consists of three sections: an inner rail that secures directly to the chassis, an outer rail that secures to the rack, and a middle rail which extends from the outer rail. These assemblies are specifically designed for the left and right side of the chassis.



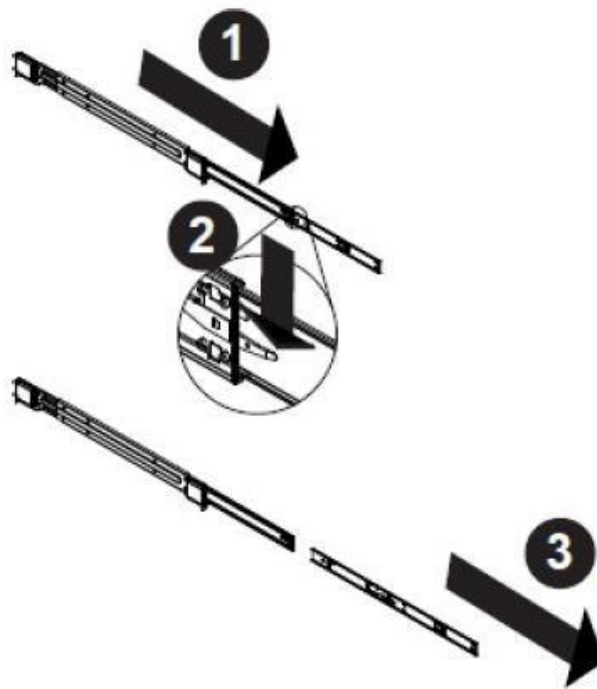
Identifying the Outer Rail, Middle Rail and Inner Rail (Left Rail Assembly Shown)

Releasing the Inner Rail

Each inner rail has a locking latch. This latch prevents the server from coming completely out of the rack when the chassis is pulled out for servicing. To mount the rail onto the chassis, first release the inner rail from the outer rails.

Releasing the Inner Rail from the Outer Rails:

1. Pull the inner rail out of the outer rail until it is fully extended as illustrated below.
2. Press the locking tab down to release the inner rail.
3. Pull the inner rail all the way out.
4. Repeat for the other outer rail.

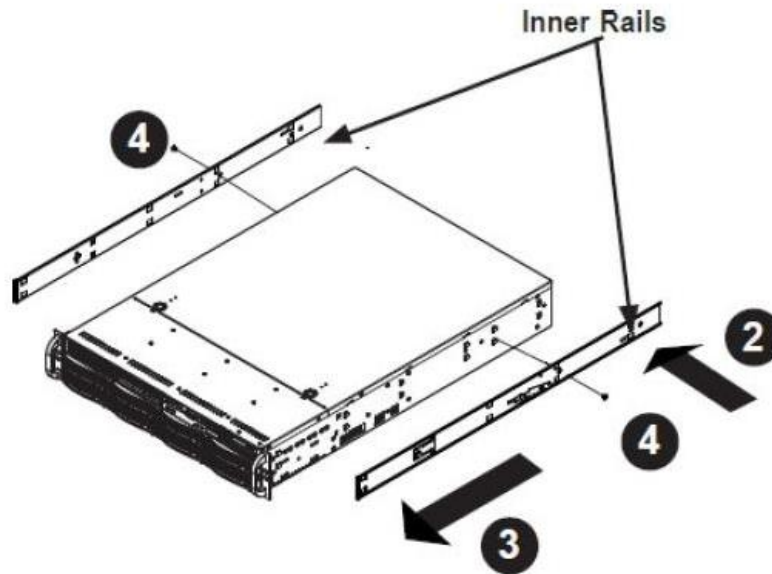


Extending and Releasing the Inner Rail

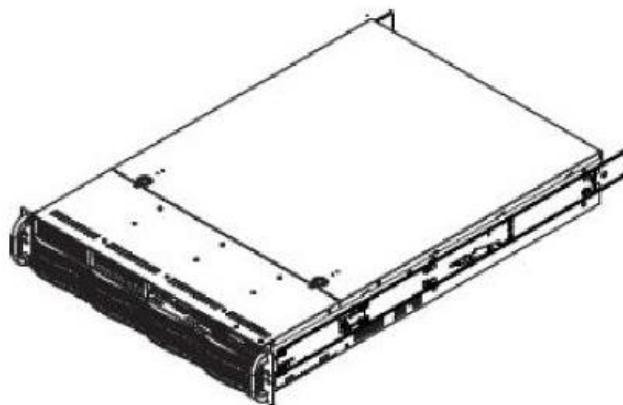
Installing the Inner Rails on the Chassis

Installing the Inner Rails

1. Identify the left and right inner rails. They are labelled.
2. Place the inner rail firmly against the side of the chassis, aligning the hooks on the side of the chassis with the holes in the inner rail.
3. Slide the inner rail forward toward the front of the chassis until the quick release bracket snaps into place, securing the rail to the chassis.
4. Optionally, you can further secure the inner rail to the chassis with a screw.
5. Repeat for the other inner rail.



Installing the Inner Rails

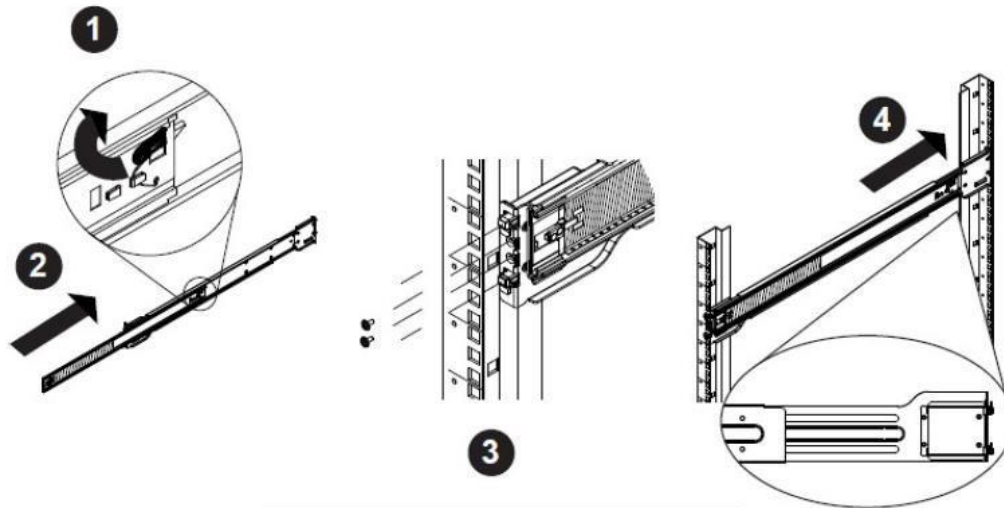


Inner Rails Installed on the Chassis

Installing the Outer Rails onto the Rack

Installing the Outer Rails

1. Press upward on the locking tab at the rear end of the middle rail.
2. Push the middle rail back into the outer rail.
3. Hang the hooks on the front of the outer rail onto the square holes on the front of the rack. If desired, use screws to secure the outer rails to the rack.
4. Pull out the rear of the outer rail, adjusting the length until it just fits within the posts of the rack.
5. Hang the hooks of the rear section of the outer rail onto the square holes on the rear of the rack. Take care that the proper holes are used so the rails are level. If desired, use screws to secure the rear of the outer rail to the rear of the rack.



Extending and Mounting the Outer Rails

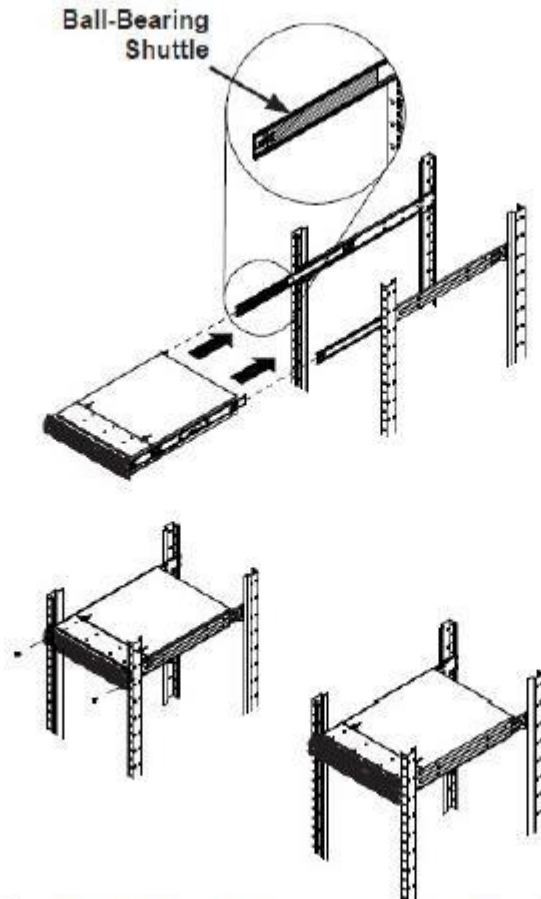
The rack stabilizing mechanism must be in place, or the rack must be bolted to the floor before you slide the unit out for servicing. Failure to stabilize the rack can cause the rack to tip over. Do not use a two post "telco" type rack.

Sliding the Chassis onto the Rack Rails

Warning: Mounting the system into the rack requires at least two people to support the chassis during installation. Please follow the safety recommendations printed on the rails.

Installing the Chassis into a Rack

1. Extend the outer rails as illustrated above.
2. Align the inner rails of the chassis with the outer rails on the rack.
3. Slide the inner rails into the outer rails, keeping the pressure even on both sides. When the chassis has been pushed completely into the rack, it should click into the locked position.
4. Optional screws may be used to hold the front of the chassis to the rack.

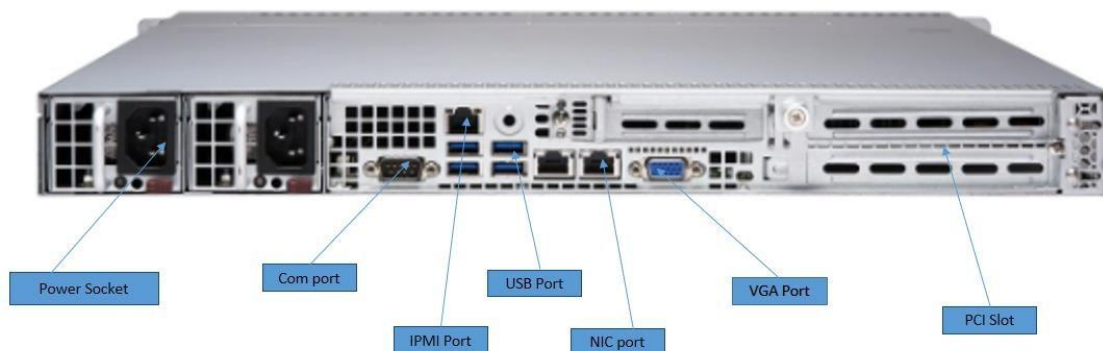


Installing the Chassis into a Rack

Note: The figure above is for illustrative purposes only. Always install servers to the bottom of the rack first.

Caution: Do not pick up the server with the front handles. They are designed to pull the system from a rack only.

Power Up & Initial Access Instructions



Back Panel Connections of the CBY VERITAS APPLIANCE

These are the steps a user needs to follow in order to start using the CBY Veritas Appliance

- 1- Connect both power supply modules to a power outlet using the included power cords.
- 2- Connect Ethernet cables to the System Management, Network (iSCSI/NAS) and IPMI ports as shown in the diagram.
- 3- If you purchased the appliance with additional network ports, then please connect those as well.
- 4- Connect a monitor to the VGA port.
- 5- Connect a keyboard and a mouse to the USB ports.
- 6- Power up any Expansion Units, then power up the CBY VERITAS APPLIANCE

Configuring IPMI

This configuration is optional to perform as the Appliance is Factory Engineered.

The Intelligent Platform Management Interface (IPMI) configuration allows for Remote Management and Power Control of the CBY VERITAS APPLIANCE system.

Go to IPMI configuration Setup
Go to Network
Assign IP address
Subnet mask
Gateway
Click on OK

Assign username and password for access from remote

Install and Configure Windows Server Essentials

This configuration is optional to perform as the Appliance is Factory Engineered.

Step 1: Install the Windows Server Essentials operating system

[! IMPORTANT] After the operating system is installed, do not customize your server until you finish

Step 2: Configure the Windows Server Essentials operating system.

Estimated completion time: Approximately 40 minutes.

[! NOTE] The estimated completion times throughout this procedure are based on minimum hardware requirements.

Step 1: To Install the Operating System

1. Connect your computer to your network with a network cable.
2. Turn on your computer, and then insert the Windows Server Essentials DVD into the DVD drive.

If you are performing an unattended installation, connect the removable media (such as USB flash drive) that contains your answer files. Depending on the contents of your answer files, you may not see some or any of the following installation screens.

3. Restart your computer. When the message Press any key to boot from CD or DVD appears, press any key.
 4. Select the Language that you want to install, Time and currency format, and Keyboard or input method, and click Next.
 5. Click Install now.
 6. In Enter the product key, type the product key. (you can skip this option also) Read the License terms. If you accept them, select the I accept the license terms check box, and then click Next.
 7. In Which type of installation do you want? click Custom: Install Windows only (advanced)
 8. In Where do you want to install Windows? select the hard drive where you want to install the Windows operating system. Verify that all of your internal hard drives are available for installation.
Windows Server Essentials must be installed as C: volume, and the volume size must be at least 60 GB.
Attach the removable media to your computer, and then click Load Driver.
- [! IMPORTANT] You cannot move the operating system to a different partition after you finish this step. During the installation, temporary files are copied to an installation folder on your computer, which takes about 40 minutes. After the Windows Server Essentials operating system is installed, your computer restarts. Now, you are ready to configure the Windows Server Essentials operating system.

Step 2: Configure the Windows Server Essentials operating system.

[! IMPORTANT] Before beginning this step, ensure that the local network adapter is connected to a router or a switch that is turned on and functioning properly.
Estimated completion time: Approximately 40 minutes

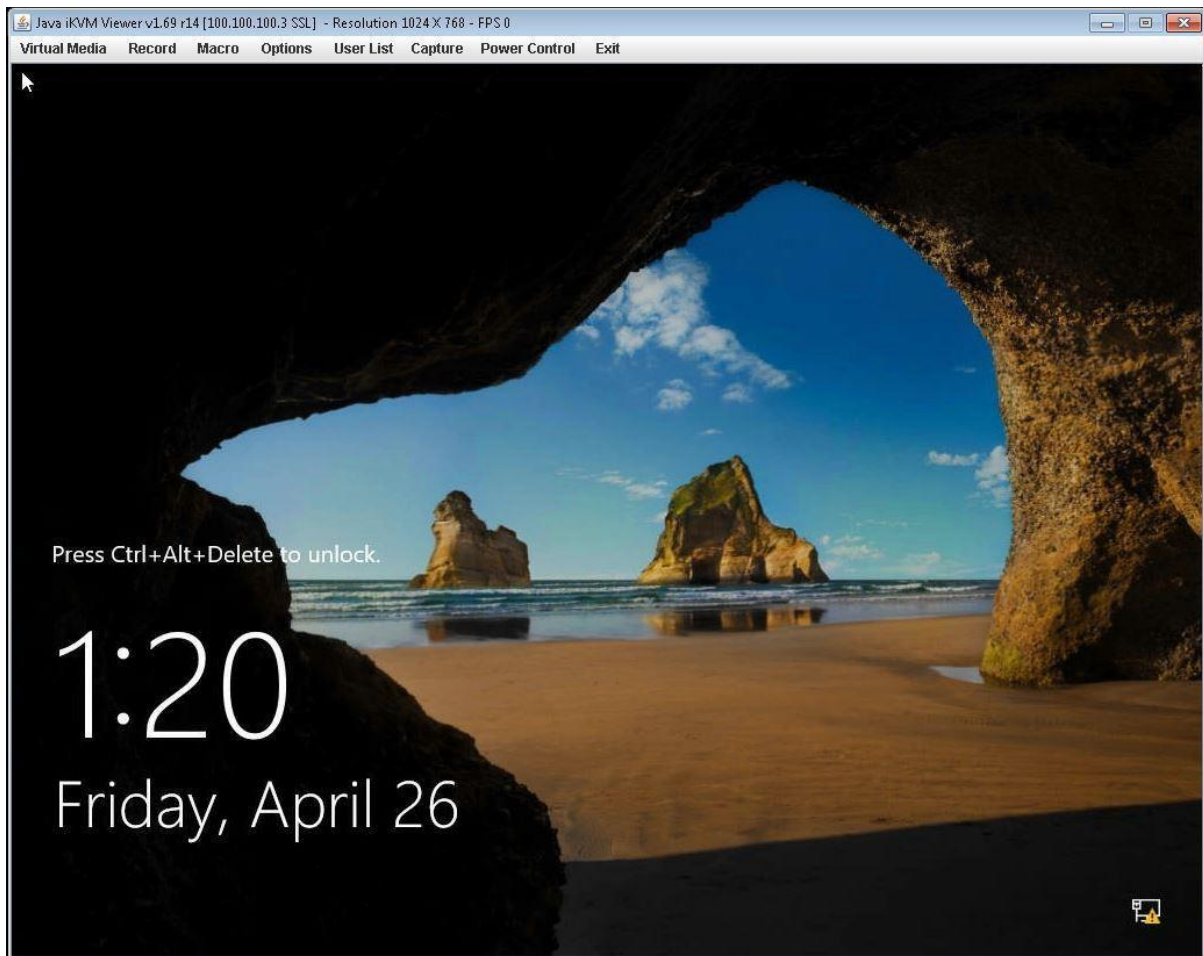
To configure the operating system

1. On the Verify the date and time settings page, click Change system date and time settings to select the date, time, and time zone settings for your server. When you are finished, click Next.
If the time zone settings differ, the server installation might not succeed.
2. On the Choose server installation mode page, do one of the following:
 - i. Choose Clean install to set up a full new installation of the Windows Server Essentials server software.
 - ii. Choose Server migration to install Windows Server Essentials and join this server to an existing Windows domain.
3. On the Personalize your server page, enter the name of your organization, an internal domain name, and the server name.
4. Click Next.
5. On the Provide your administrator account information page, type the information for a new administrator account.
[! CAUTION] Do not name the network administrator account Administrator or Network Administrator. These account names are reserved for use by the system.
6. On the Provide your standard user account information page, type the information for a new standard user account, and then click Next.
7. On the Keep your server up-to-date automatically page, select how you want to receive Windows Updates for your server, and then click Next.
8. The Updating and preparing your server page displays the progress of the final installation process. This takes time to complete, and your computer will restart a couple of times.

9. After the last server restart, the Your server is ready to be used page appears. Click Close.
10. Click the Dashboard tile on the Start screen, and then on the Dashboard, complete the Set Up My Server tasks on the Home page. You should complete these tasks immediately after your Windows Server Essentials installation finishes.

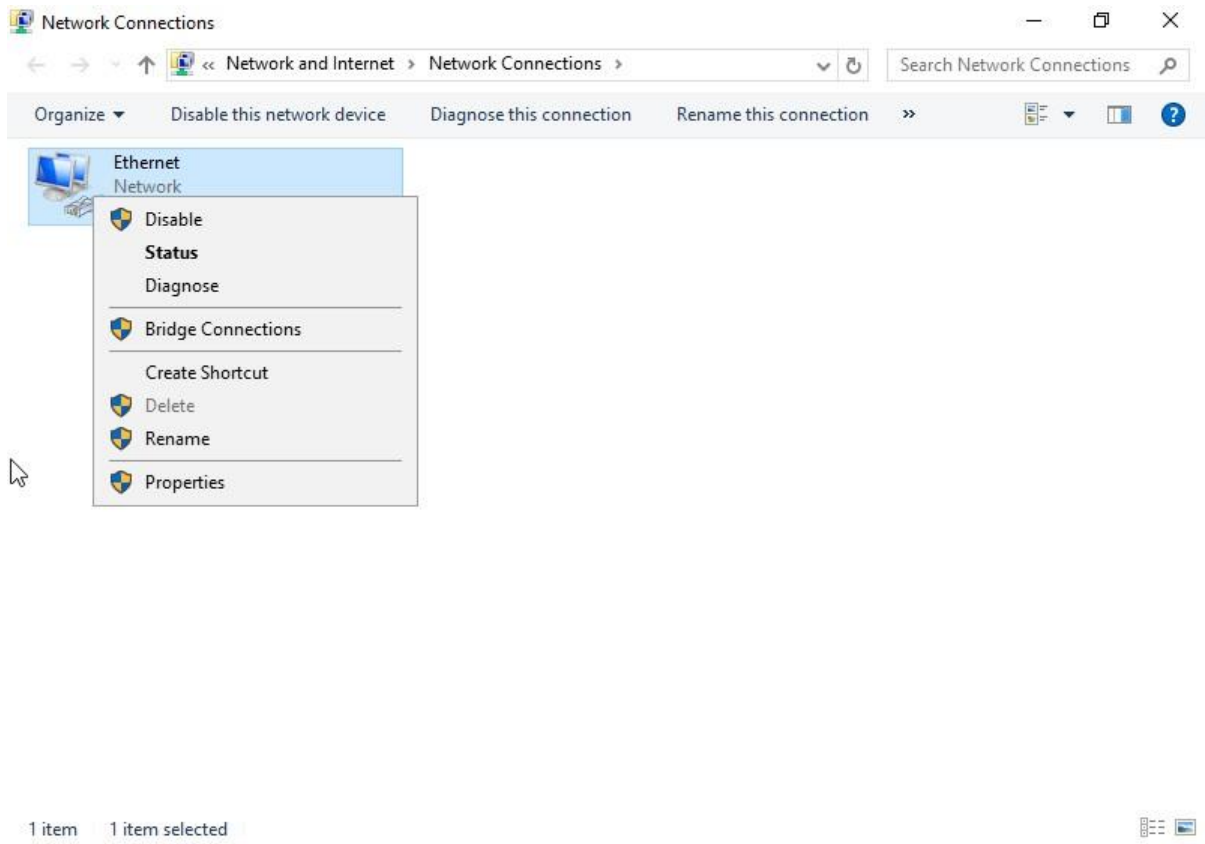
Network Configuration

This section describes configuration of the Network. IP Addresses used in this section are for example only. Management Network Configuration.
Connect to System console. Attach a keyboard and monitor or use system IPMI

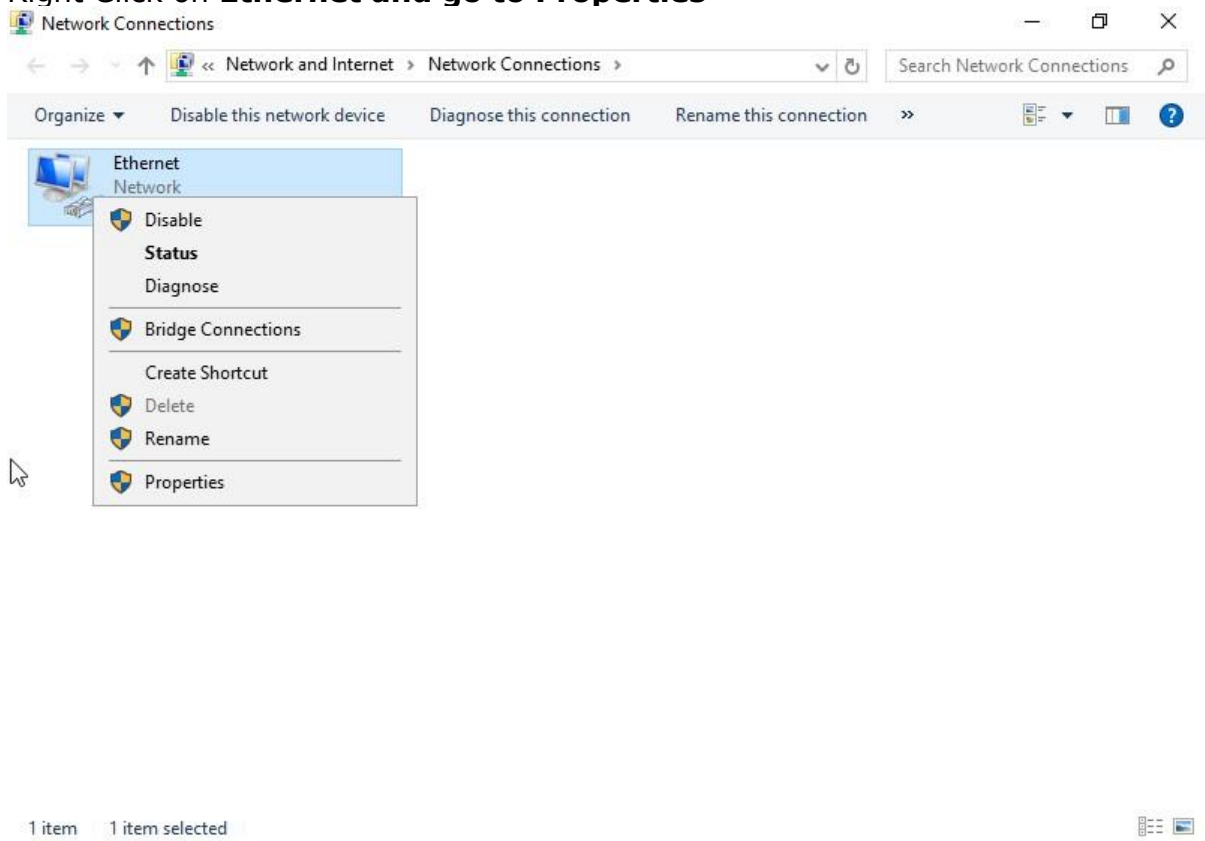


Launch the console,
press CTRL + ALT + DELETE and enter the following credentials:
Username: administrator
Password: local login Or domain login

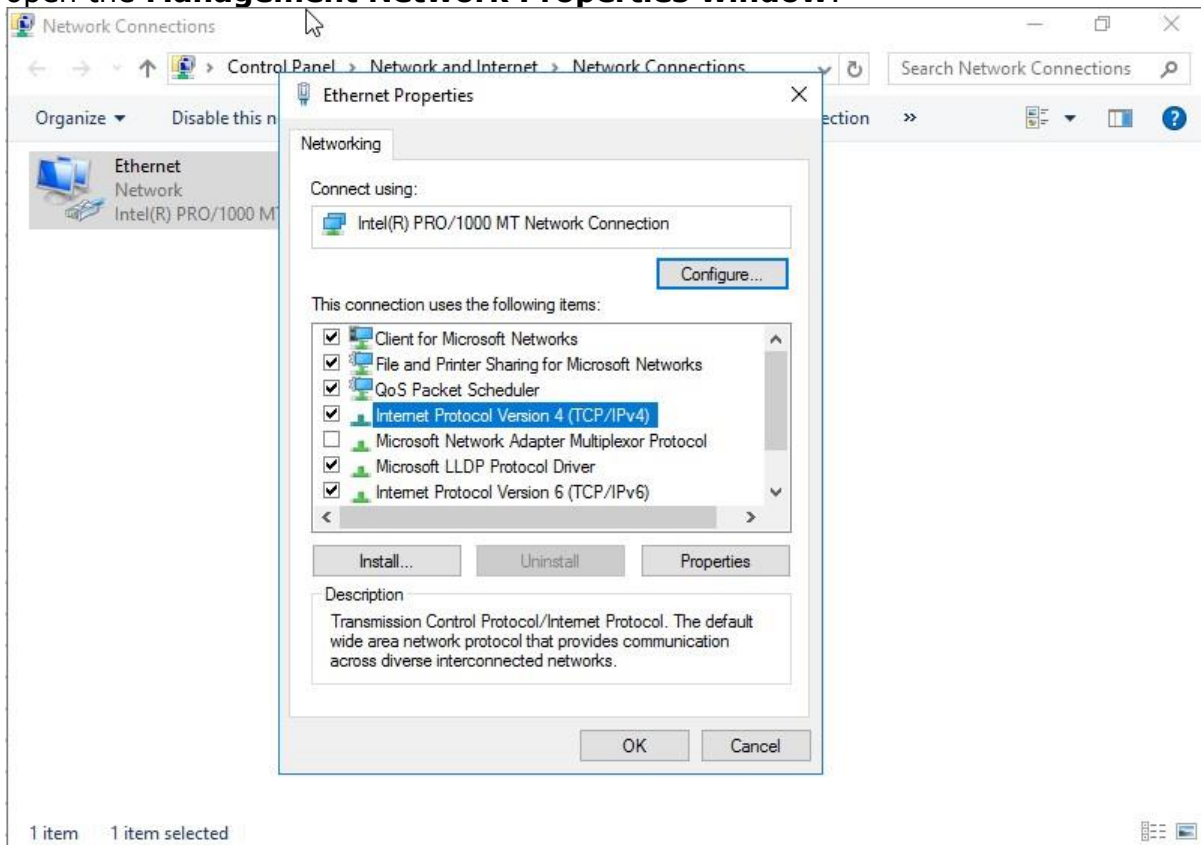
Go to the **Control Panel** and select **Network and Internet** and then **Network and Sharing Center**.



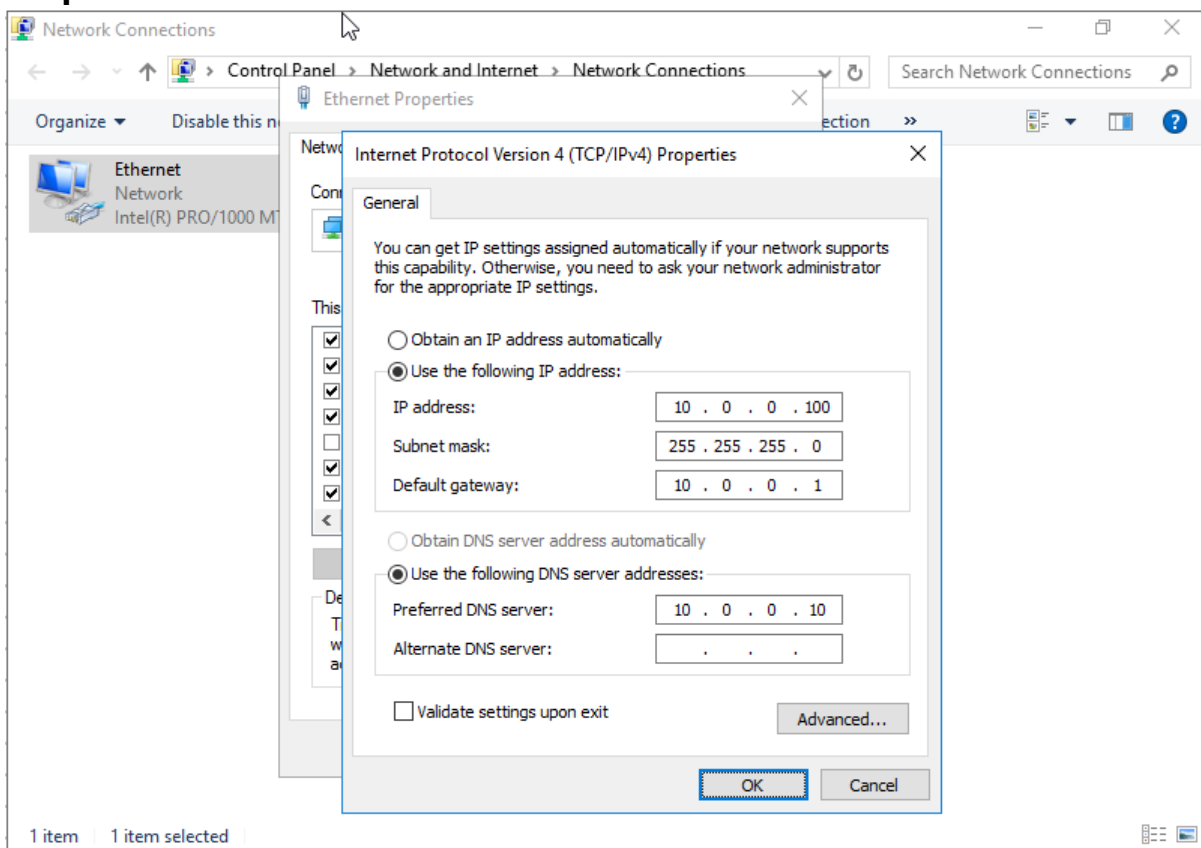
Right Click on **Ethernet** and go to **Properties**



Right click on the appropriate management port and select properties. This will open the **Management Network Properties window**:



Left click on **Internet Protocol Version 4 (TCP/IPv4)** and then click **Properties**:



Assign **static IP and DNS server** addresses. Once you've assigned the values, **click on OK**.

Make sure to disable **Internet Protocol Version 6** from the Management Network Properties

After disabling IPv6, **click OK**. This completes the network configuration process

VERITAS Backup Exec 21.2 installation Step

Installation step of Veritas Backup exec

Installing Backup Exec by using the Installation Wizard

The Backup Exec installation program provides two methods of installation: typical and custom. A typical installation is simpler than a custom installation and will install all agents and features included with your license. A typical installation may be appropriate for small, simple environments. A custom installation is designed for large or complex environments, such as a remote Backup Exec server or an environment which uses the Enterprise Server feature. In a custom installation, you can choose which features and agents included with your license will be installed. This makes it ideal for a user who wants to view and control which agents and features will be installed.

In a typical installation, Backup Exec makes the following decisions for you, based on common installation scenarios:

- Backup Exec is installed to a local Backup Exec server.
- SQL Express is installed with the default instance.
- All agents and features included with your license are installed.
- Veritas Update runs automatically.

Note: Before you install, make sure that your licenses for the Backup Exec editions that you want to install are available. You must enter a license in order to install any edition of Backup Exec, but you can install the trial edition without a license.

How to perform a typical installation?

Follow these steps to perform a typical installation of Backup Exec. A typical installation of Backup Exec installs all of the features included with your license.

To install a typical installation of Backup Exec

From the installation media browser, click Install Products, and then select Backup Exec. If the required version of Microsoft .NET Framework is not already installed on this computer, Backup Exec installs it.

The Backup Exec installation program uses the Microsoft .NET Framework version 4.8. However, not all versions of Windows support .NET Framework 4.8. If the Backup Exec installation program encounters an operating system that requires

the use of a different version of the .NET Framework, Backup Exec blocks the installation and provides an error message that instructs you to install the required version of .NET Framework.

On the Welcome panel, read the license agreement, and then click I accept the terms of the license agreement and click Next.

On the Installation Type panel, click Typical installation, and then click Next. The Backup Exec Environment Check will run automatically.

Review the results of the Environment Check. Do one of the following:
If the Environment Check does not reveal any issues that may prevent a successful installation of Backup Exec, click Next. If the Environment Check reveals any issues that may prevent a successful installation of Backup Exec, click Cancel to exit the wizard. Correct the issues before you attempt to install Backup Exec again.

On the Add Licenses panel, use one of the following methods to add licenses.

To enter entitlement IDs manually

Note: It will be available with the Appliance Lic Document

Do the following in the order listed: In the Enter an Entitlement ID field, type the appropriate entitlement ID from your license certificate. Click Add to List.

If you want to change the directory where Backup Exec files are installed, click Change, and then select a new location.

If you change the directory to a new location, ensure that you select a secure location where you can store sensitive data such as passwords.

If, during Backup Exec installation, the installer detects Backup Exec database (BEDB) files from an earlier installation, the installer provides you the option to use either the new database files or the existing database files. If you choose to use the new database files, the old database files are copied to a different location.

However, if you choose to use the existing database files, the installer warns you that the installation might fail if the existing database files are of a different version than the Backup Exec version you are trying to install.

Click Next.

If the SQL Express Setup panel appears, perform the following steps to identify the location of the SQL Express setup file:

Click Browse.

Navigate to the location where you downloaded the SQL Express 2008 R2 SP2 setup file.

Click OK.

Click Next.

You can use this copy if the upgrade to Backup Exec fails.

After the upgrade to Backup Exec is complete, the deduplication storage is converted to a newer version. The deduplication storage folder remains offline till the conversion is complete. After the conversion is complete, and services are restarted, the deduplication storage comes online.

Jobs that are targeted to deduplication storage fail during the conversion process. Jobs that are scheduled on other storage continue to run during the deduplication storage conversion. The estimated time for the conversion is displayed in months, days, and hours. It is recommended that you keep a secondary copy of the deduplication data before the upgrade starts, which can be used if the conversion process fails.

Note:

This panel is displayed only when you upgrade Backup Exec. Select the I have read and understood the information check box, and then click Next.

Review the Backup Exec installation summary, and then click Install.

If you installed the Agent for Windows on remote computers, on the Remote Installation dialog box, click Next. When the installation is complete, you can choose to restart the system, view the readme, or remove the Backup Exec shortcut from the desktop. Click Next, and then click Finish to exit the wizard.

If you chose to restart the system, the computer will restart automatically.

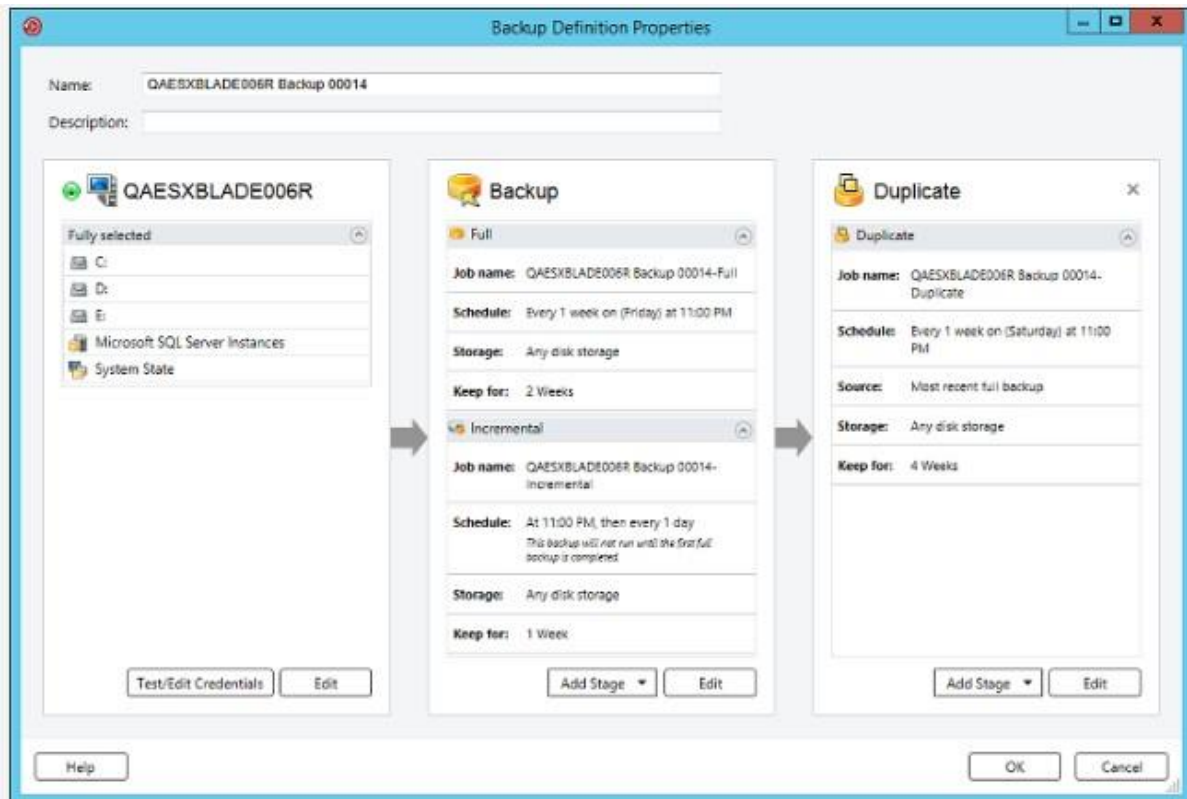
The installation process creates an installation log named **BKUPINST21.htm** in the following directory on the computer where Backup Exec is installed.

Veritas Backup Exec - How to create a backup job

When you want to back up data, you create a container that is called the backup definition. Backup definitions contain backup selections, job templates, and stages.

Table: Backup definition contents

Item	Description
Backup selections	Backup selections include any servers, volumes, or data that you have selected to back up.
Job templates	Job templates are the collection of settings that Backup Exec uses to create jobs. Backup job settings can include scheduling options, storage device options, or backup methods for selected types of data, for example. When you want to run a backup, Backup Exec combines the job template with the backup selections to create a backup job that runs according to the options that you specified. Backup definitions always contain one job template that uses the full backup method, but recurring jobs can also contain incremental, differential, or data-specific job templates.
Stages	Stages are optional tasks that you can run with backup jobs. Backup definitions can contain one or more stages. You can create stages that duplicate your backup data or create virtual machines with your backup data.



To add additional servers to the backup definition:

Click Add.

Select the server or servers that you want to add to the backup definition.

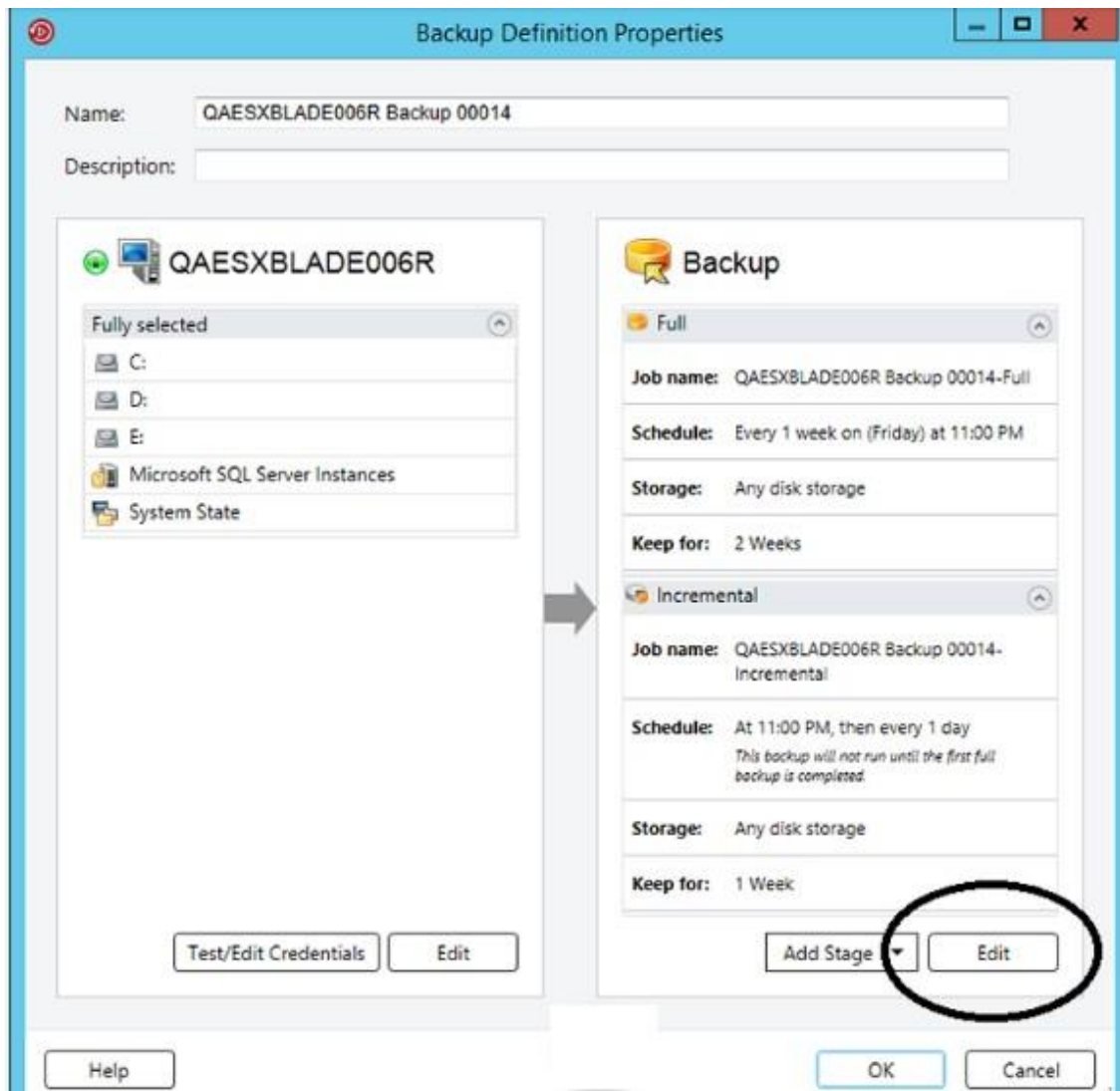
Click OK.

Select the data that you want to back up.

Servers are selected in their entirety by default. If you do not want to back up the entire server, double-click the server name to see all of the contents. Select the check boxes for each item that you want to back up.

Click OK.

In the Backup box, **click Edit.**



In the left pane, click Schedule, and then select when you want the backup job or jobs to run.

In the left pane, click Storage, and then select the storage device that you want to use for the backup job or jobs.

In the left pane, select any additional options that apply to the backup job or jobs. When you are finished selecting all applicable options for the backup definition, click OK.

(Optional) You can add stages to this backup definition to duplicate your data or create virtual machines with your backup data.

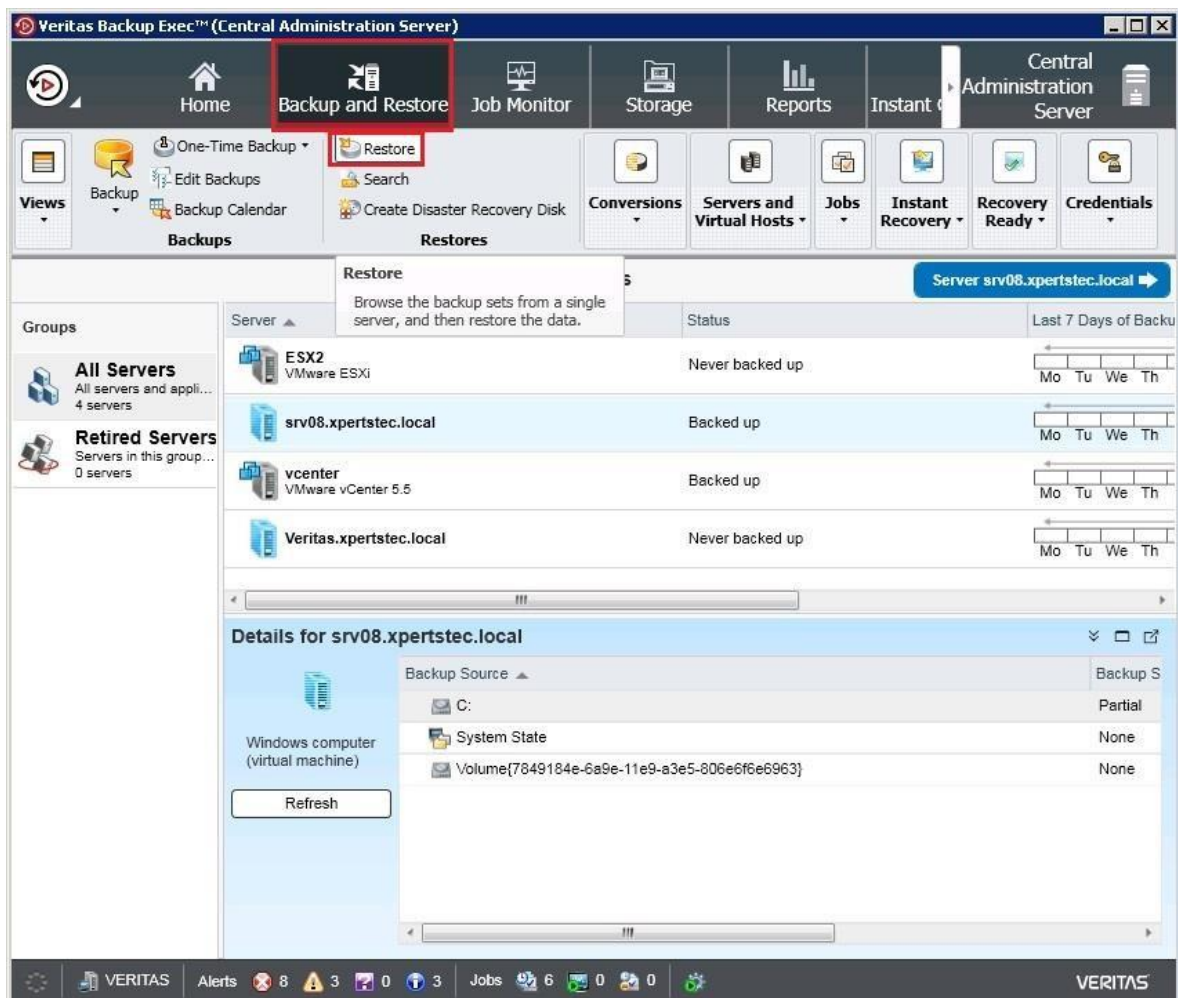
Click OK to save the backup definition settings.
The backup jobs and stages run at the time that you selected.

How to restore backup

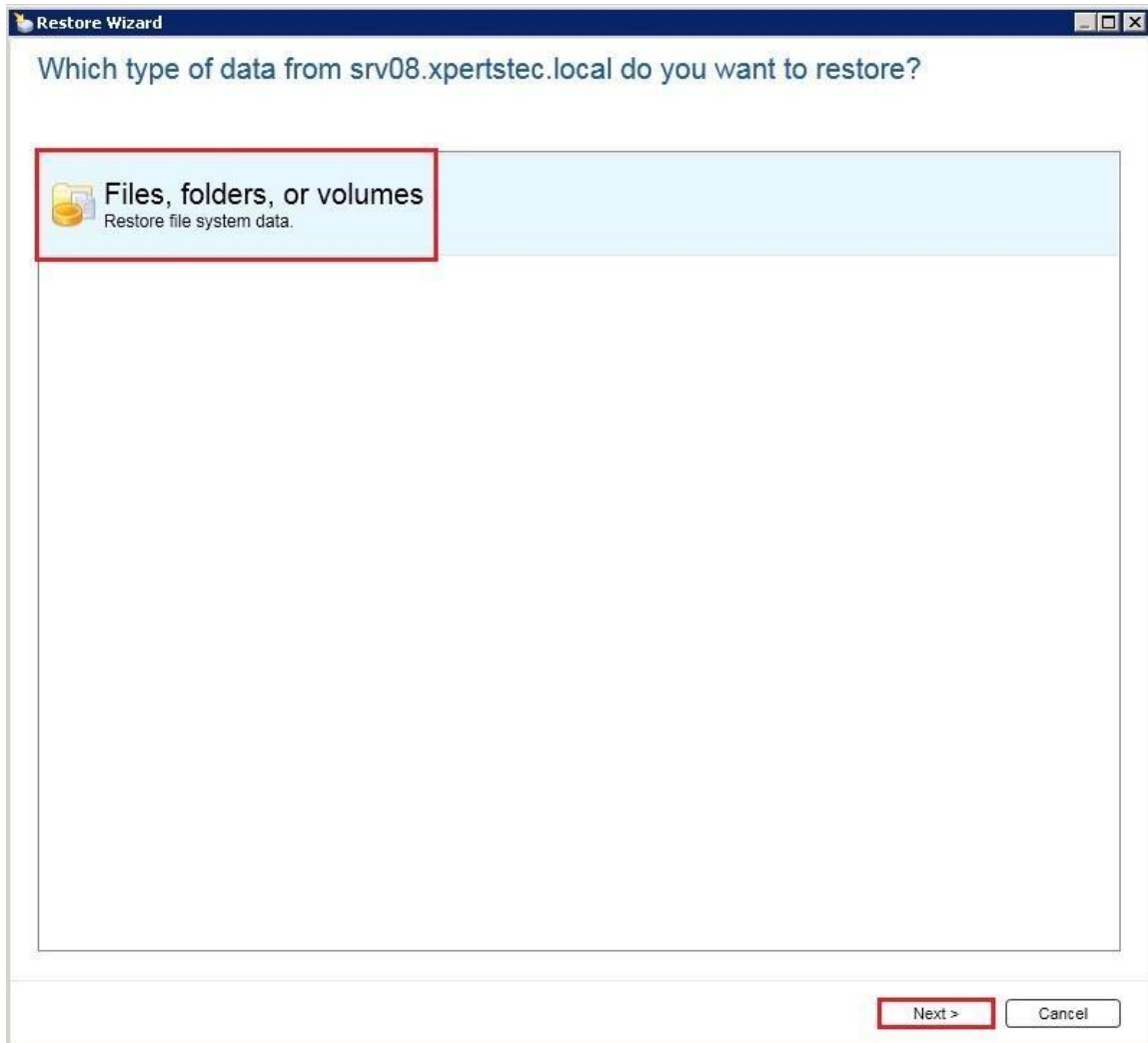
Restore files and folders VERITAS backup exec, If you recognize which backup set, completed the backup job, or memory device media contains the info that you simply want to revive, you'll start the Restore Wizard from there. Otherwise, you can select the server, then start the Restore Wizard.

Restore Files and Folders Veritas

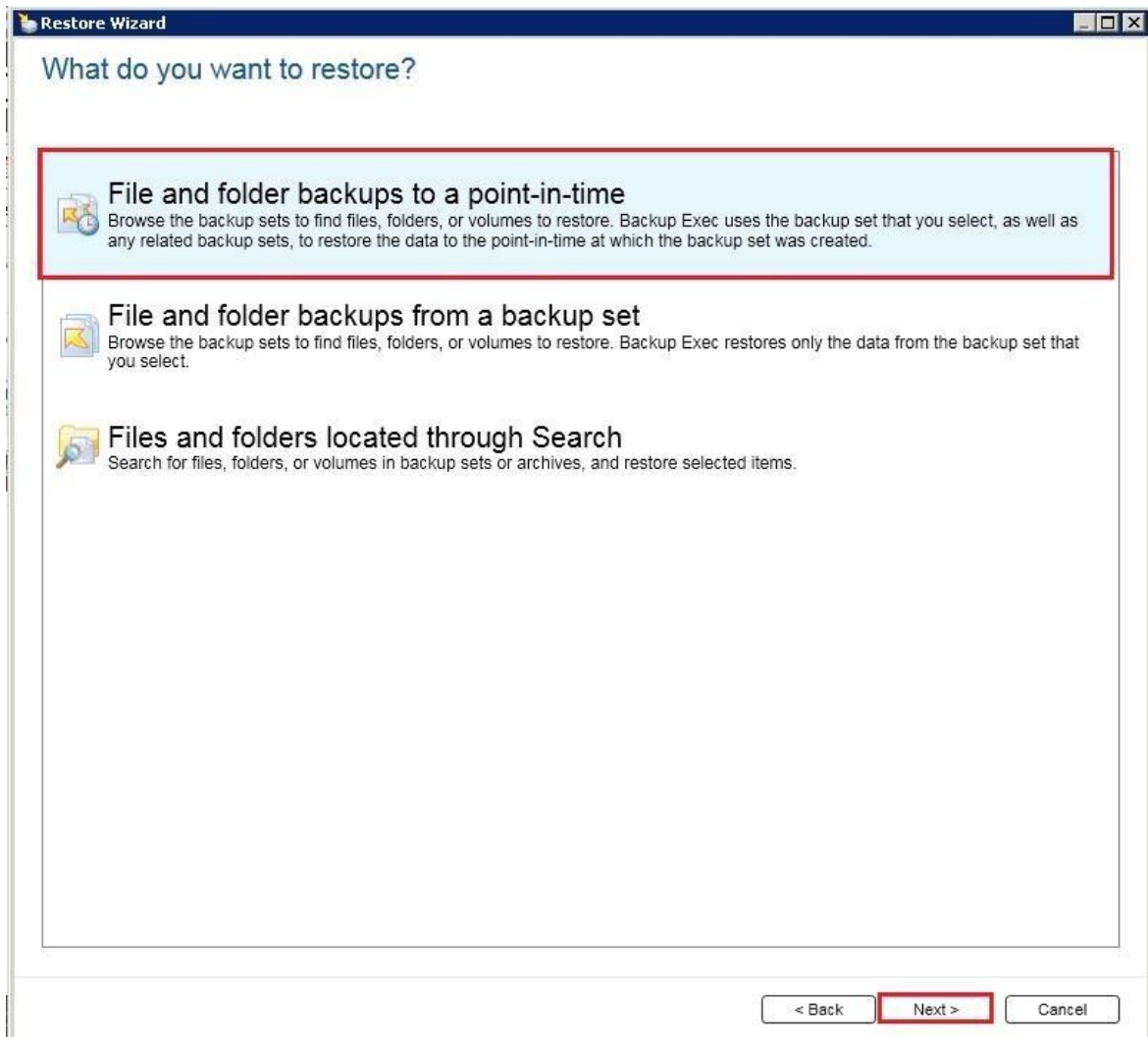
- 1- On the Backup and Restore tab, right-click the server for which you want to restore data and click Restore



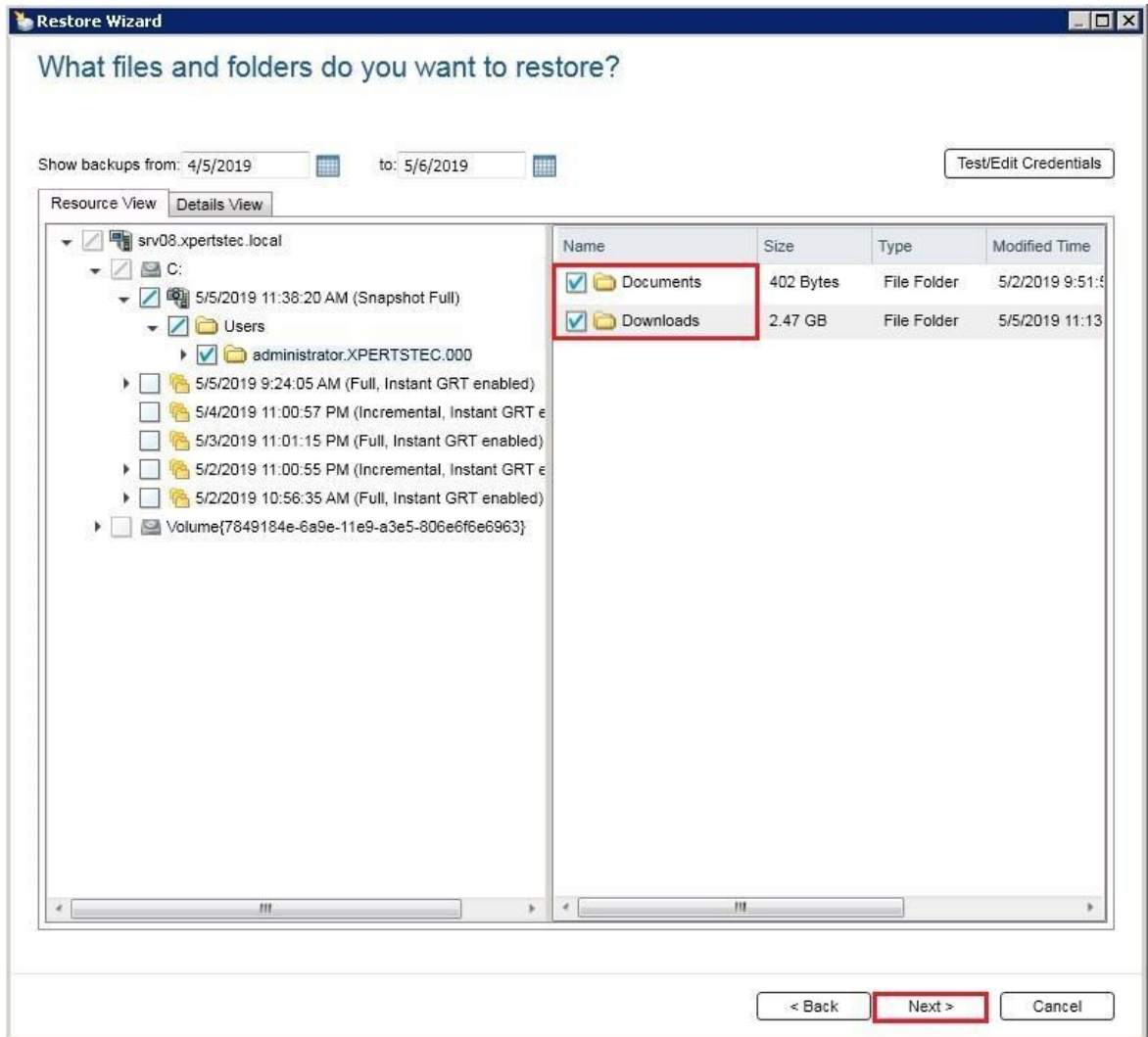
- 2- Select Files, folders, or volumes and click Next.



3- Select Files and folders backups to a point-in-time and click next.



- 4- Expand Server and select the data files and folders you want to restore and click next.



- 5- Select where do you want to restore the (files and folders) data (I am restoring to the original location) and click next

Restore Wizard

Where do you want to restore the data?

To the original location

To a different location

Drive:
Example: \\serverdrive:

Path:
Example: \\path

Server logon account:

Note: If you restore files from a volume that has Windows deduplication, Backup Exec places the files on the disk as non-deduplicated. Ensure that you have enough disk space to restore the non-deduplicated data before you run a restore job. For more information see: TECH204775

Note: During a redirected restore, you may not be able to restore some file system attributes from the original data. For more information about how Backup Exec treats the file system attributes for different types of file systems, see: TECH205960

Microsoft Virtual Hard Disk (Windows Server 2008 R2 or later)

Create a Virtual Hard Disk for redirected data

Create a different Microsoft Virtual Hard Disk for each backup set that is restored

Create a single Microsoft Virtual Hard Disk that contains the merged files and folders from all redirected backup sets

VHD file name:

What happens if I restore to a Virtual Hard Disk?

6- Review the restore wizard and select the option you want and click next.

Restore Wizard

How do you want to maintain file integrity, hierarchy, and security for restored data?

Restore files that were corrupt or incomplete in the backup. Some data may be retrievable from them.

Recreate the directory structure from the backup when the data is restored; otherwise, all data is restored without any directory structure.

Restore existing files

Restore over existing files

Skip if the file exists

Overwrite the file on disk only if it is older

Restore security information and file system permissions

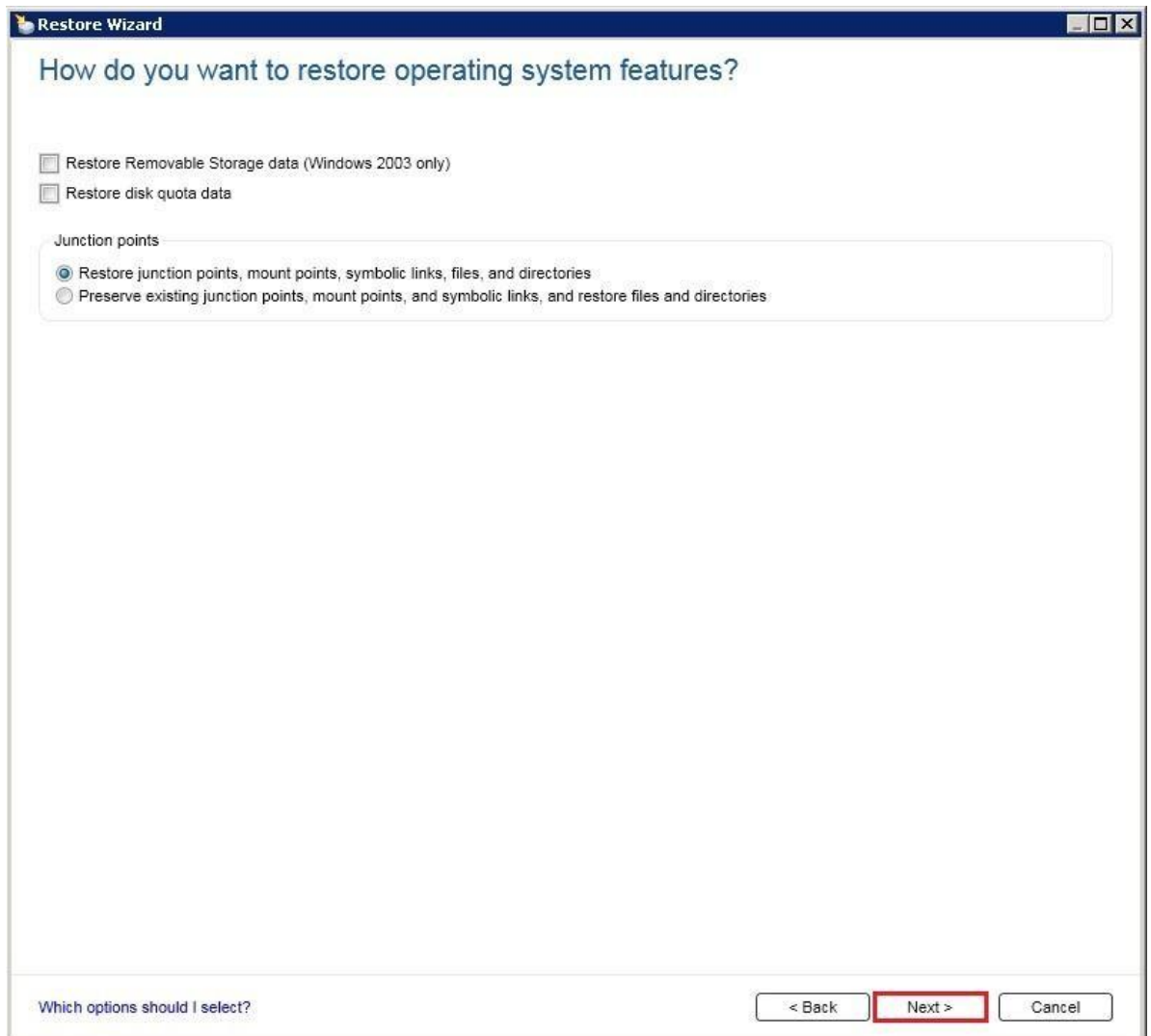
Restore files with their security information and file system permissions

Restore files without their security information and file system permissions. The security information and file system permissions for the restored files are determined by the security information and file system permissions at the destination location

Restore only the security information and file system permissions for files that exist at the destination; do not restore the file content

< Back **Next >** Cancel

7- under restore operation system feature select the features you want to choose and then click next.



- 8- What additional tasks do you want to perform before and/or after a store, under notification options you can manage recipients and then click next.

Restore Wizard

What additional tasks do you want to perform before and/or after a restore?

Run a command before and/or after the restore

Type a command to run before the restore runs:

Type a command to run after the restore runs:

Let Backup Exec check the exit codes of the commands to determine if the commands completed successfully

Run job only if pre-command is successful

Run post-command only if pre-command is successful

Run post-command even if job fails

Cancel command if not complete within minutes

Run these commands:

On this Backup Exec server

On each server restored to

Notification

Select each recipient to notify when the job completes.

Recipient Name	Recipient Type

Include the job log in email notifications

Which options should I select for the additional tasks?

- 9- Type the folder name you are restoring and configure Schedule or Select Run now and then click Next.

Restore Wizard

What job name and schedule do you want to use?

Name:

Schedule: Run now
 Run on:
 Create without a schedule

Options

Schedule Queue

Reschedule the job if it does not start hours after its scheduled start time

Cancel the job if it is still running hour after its scheduled start time

Submit job on hold

< Back **Next >** Cancel

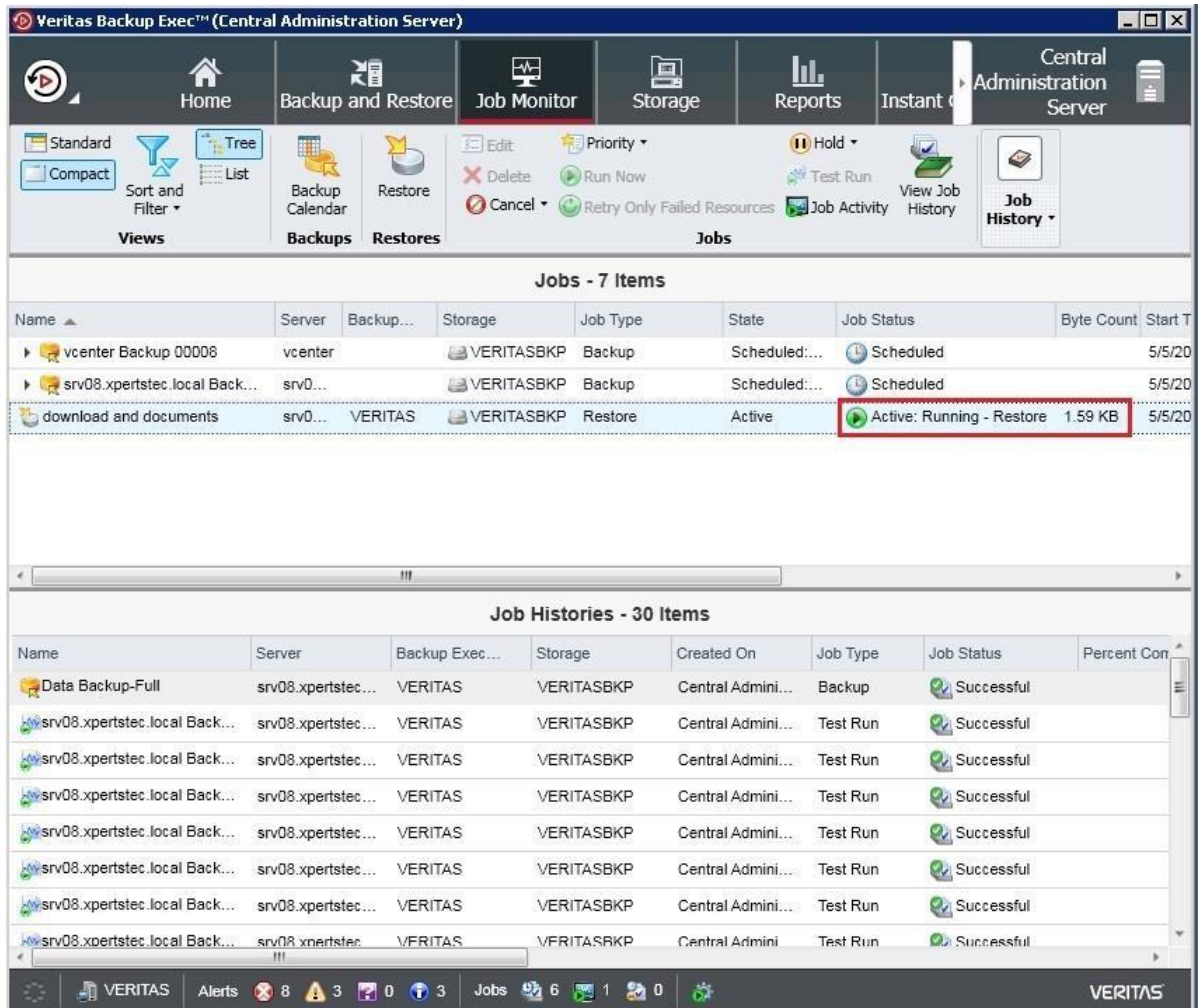
10- Review Restore (files and folders) Summary and then click Finish.

Restore Wizard

Restore Summary

Data to restore	
Restore:	File and folder backups from a backup set
Type of data	
Type:	File and folder backups from a backup set
Selections	
SRV08.xpertstec.local\C: Include - Users\administrator.XPERTSTEC.000*. * [Subdir]	
Location to restore to	
Restore to original location:	Yes
File integrity, hierarchy, and security options	
Restore files that were corrupt or incomplete in the backup:	No
Recreate the directory structure from the backup when the data is restored:	Yes
Restore existing files:	Overwrite the file on disk only if it is older
Restore security information and file system permissions:	Restore files with their security information and file system permissions
Operating system features	
Restore Removable Storage data (Windows 2003 only):	No
Restore disk quota data:	No
Junction points:	Restore junction points, mount points, symbolic links, files, and directories
Additional tasks	
Pre and post commands:	No pre- or post-commands are configured
Notifications:	No recipients have been selected for notification when the job completes
Job name and schedule	
Name:	download and documents
Schedule:	Run Now
Submit job on hold:	No

11- Under Job Monitor, Now you can monitor the running job.



CBY Services Contact

WEBSITE:

www.cbyappliances.com

EMAIL:

support@cbyappliances.com

WARRANTY REGISTRATION FORM FOR ACTIVATION

Product Name: [] CBY-BE 4K [] CBY-BE 8K [] CBY-BE 16K Veritas Appliance

Serial No.: _____ (As printed on Appliance Label)

Company Name: _____

Address: _____

Address: _____

City: _____ State: _____

Contact Name: _____ Designation: _____

Email: _____ Mobile: _____

SITE DETAILS FOR THE APPLIANCE

Site Name: _____

Address: _____

Address: _____

City: _____ State: _____

Contact Name: _____ Designation: _____

Email: _____ Mobile: _____

Veritas Appliance Purchase Date: _____

Veritas Appliance Reseller Name: _____

Address: _____

City: _____ State: _____

Contact Name: _____ Designation: _____

Email: _____ Mobile: _____

*** Appliance manufacturer is not responsible for any data loss ***

